

The Heritage

2645 Square Feet

Total width: 56'-0"
Total depth: 50'-0"



See reverse for options and upgrades

**First Floor Master
3 Bedrooms
2 1/2 Baths**

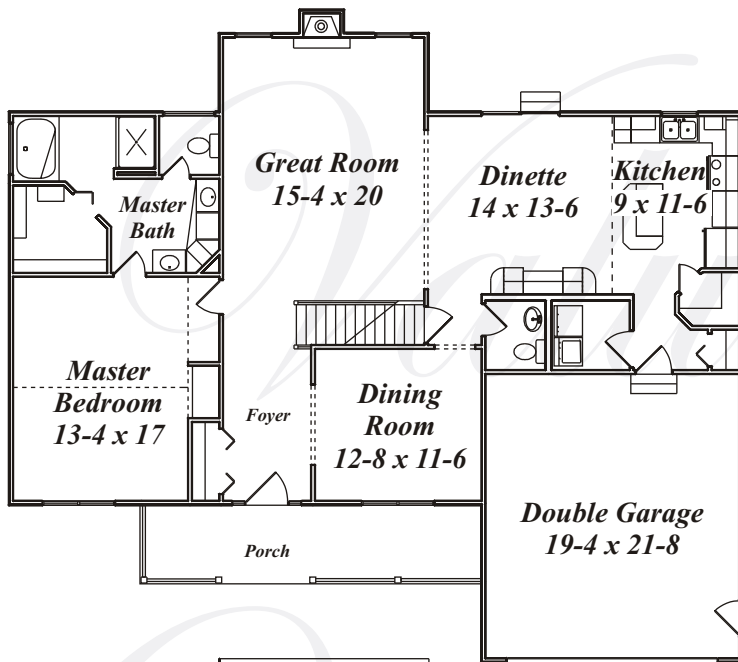
Features

**Dramatic 2 story foyer
with view into 2 story great room*

**Vaulted kitchen with an
island, desk and
oversized pantry*

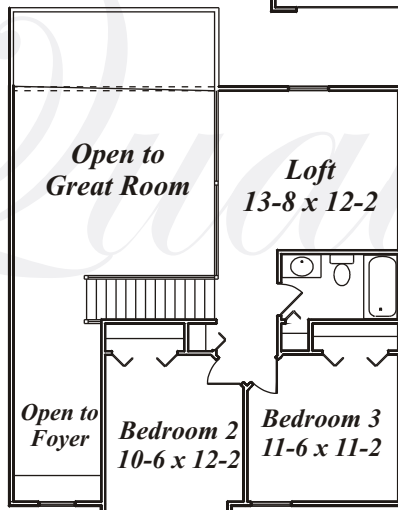
**First floor master bedroom
suite with cathedral ceiling
& built-ins*

**Loft with railing
overlooking great room*



Version 4
Brick/Siding

Base First Floor
1579 Square Feet



Base Second Floor
1066 Square Feet
(includes 440/SF open space)



Office/Model Home:
10532 Cleveland Ave, NW
Uniontown, OH 44685
(330) 305-6700

www.DHHonline.com

This brochure is for illustrative purposes only and is not part of any legally binding contract.

Due to continually updated building codes and design improvements, dimensions may vary slightly. See sales associate for current floor plan dimensions.

Note: This plan is copyrighted by Dutch Heritage Homes. Federal copyright law prohibits any unauthorized use of this plan or any part thereof. Violators of the copyright law are subject to prosecution to the extent of the law.

The Heritage

2645 Square Feet

Office/Model Home:
10532 Cleveland Ave, NW
Uniontown, OH 44685
(330) 305-6700
www.DHHonline.com

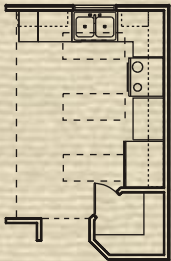


THE HERITAGE IV, 2645 S.F.

This home has Heritage Line features plus the following personal choices:

**Permit fees and County charges may vary by location

(3) skylights in kitchen



KITCHEN / BREAKFAST AREA

- *CORIAN® TOP ON KITCHEN ISLAND
- * (3) SKYLIGHTS
- *CROWN MOLDING ON WALL CABINETS
- *OAK EDGING AT KITCHEN COUNTER
- *GARBAGE DISPOSAL
- *UNDER CABINET LIGHTING
- *ABOVE CABINET LIGHTING
- *2 ADDITIONAL ANGLED RECESSED LIGHTS IN VAULTED CEILING AREA
- *UPGRADED VINYL FLOORING

GREAT ROOM

- *UPGRADED BERBER CARPET
- *DOUBLE SWITCHED PADDLE FAN
- * (2) RECESSED LIGHTS AT FIREPLACE
- *ELECTRICAL OUTLETS IN FLOOR
- *STONE CONTINUED TO CEILING ON FIREPLACE
- * (2) SKYLIGHTS

DINING ROOM

- *TRAY CEILING WITH 4 RECESSED LIGHTS
- *CARPET BORDER /INLAY
- *CHAIR RAIL
- *CROWN MOLDING

MASTER BEDROOM / BATH

- *DOUBLE SWITCHED PADDLE FAN
- *VANITY BOUTIQUE CABINET (1/2 BATH)
- * (1) SKYLIGHT
- **STANDARD 8'-0" POURED BASEMENT & STANDARD GARAGE INCLUDED**
- **STANDARD UTILITY ALLOWANCES INCLUDED**

EXTERIOR OF HOUSE

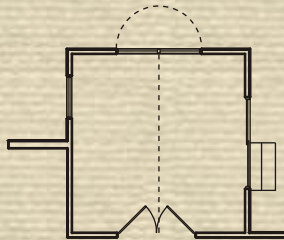
- *SIDE ENTRY GARAGE ON CORNER LOT
- *12' X 14' DECK
- *6' FRONT STEPS TAPERED TO 3' WALK
- *GAS POST LAMP
- * (3) RECESSED LIGHTS IN PORCH CEILING
- *Pella Pro Line 450 & Sliding Glass Door

OTHER UPGRADES

- *12' X 12' SUNROOM (INCLUDES CATHEDRAL CEILING & DOUBLE SWITCH WIRE FOR THE FAN)
- *CABINETS IN LAUNDRY ROOM
- *OUTLET FOR TRACK LIGHTING IN LOFT
- *HARDWOOD IN FOYER & CERAMIC TILE IN THE SUNROOM
- *FOOT LOCK FOR PELLA SLIDING DOOR
- *FOYER SWITCHED RECEPTACLE (PLANT SHELF)
- *BERBER CARPET IN THE STEP, HALL & LOFT
- *VINYL SHAKES ON FRONT ELEVATION

Not included in Duplication price:

- *Refrigerator
- *Exterior Concrete
- *Landscaping & Irrigation System
- *Security system
- *Whole house sound system
- *Decorating & window treatments



Sunroom

11-4 x 11-8

(add 144/sf)

(cathedral ceiling & wire for fan/light)
(n/a w/bay)

Heritage - Available Structural Options

- 9' ceilings on first floor (including garage)
- 2' expansion through great room and foyer (add 144/SF total)
- Enlarged laundry room with laundry tub
- Sunroom (incl cath clg & wire for clg fan/light)
(N/A with bay) (add 144/SF)
- Bay in dinette (add 16/SF) (N/A with sunroom)
- 2' expansion to rear of great room (add 37/SF)
- 4' expansion to rear of great room (add 74/SF)
- 6' expansion to rear of great room (add 111/SF)
- Convert loft into Bedroom 4
- Add bedroom 4 (reduce loft size) (add 72/SF)